

Capacity and Performance Summary

As of the schedule dated March 23rd, the total number of international flights scheduled per week is:

- ~ April: 174 flights
- ~ May: 166 flights
- ~ June: 179 flights

- ➔ Nadi Airport is scheduled for a total of 1,246 flights in March, 1,454 flights in April, and 1,427 flights in May. These flights have a total available capacity of 274.2k one-way seats for March, 306K one-way seats for April, and 302.4k one-way seats for May.
- ➔ Nausori Airport is scheduled for a total of 34 flights in March and 35 flights per month in April and May. The scheduled services provide a total capacity of 2.8K one-way seats for March and 2.9K one-way seats per month for April and May.

Fiji-International: Flights per week each way

Nadi International Airport:

Destination	Apr-26	May-26	Jun-26
Australia			
Sydney	31	30	30
Melbourne	15	13	15
Brisbane	16	15	17
Adelaide	3	3	3
Canberra	3	2	2
Cairns	3	2	3
New Zealand			
Auckland	28	26	30
Wellington	3	3	3
Christchurch	3	3	4
North America			
Los Angeles	7	7	7
San Francisco	3	3	3
Dallas	3	3	3
Vancouver	2	2	3
Pacific Island			
Nauru	1	1	1
Apia	10	10	10
Tonga	11	11	11
Port Vila	7	7	7
Tarawa	2	2	2
Honiara	3	3	3
Wallis Is.	1	1	1
Noumea	1	1	1
Kiritimati	1	1	1
Vava'u	2	2	3

Tahiti	0	0	0
Funafuti	2	2	2
Port Moresby	1	1	1
Rest of the World			
Singapore	2	2	2
Tokyo	2	2	2
Hong Kong	3	3	4
Honolulu	1	1	1
Nadi	170	162	175

Nausori International Airport:

Destination	Apr-26	May-26	Jun-26
Funafuti	3	3	3
Nauru	1	1	1
Suva	4	4	4

Fiji- International Capacity Snapshot

Australia

→ Fiji gained a return service to Sydney on the 1st, 8th & 18th November 2026, while a flight was swapped from the 20th to the 21st November 2026.

New Zealand

→ Fiji lost a return service to Auckland on the 21st and 23rd April 2026, 5th May 2026, and 23rd June 2026.

United States & Canada

→ There was no significant change to Fiji's North American network.

Pacific Islands

→ Fiji gained a weekly service to Port Moresby, effective from the 29th March 2026. In addition, a return service to Tarawa was added on the 24th February 2026.

→ Fiji's Nauru service had a change of date, from Sunday/Monday to Tuesday/Wednesday.

→ Fiji gained a return service to Apia on the 8th May 2026.

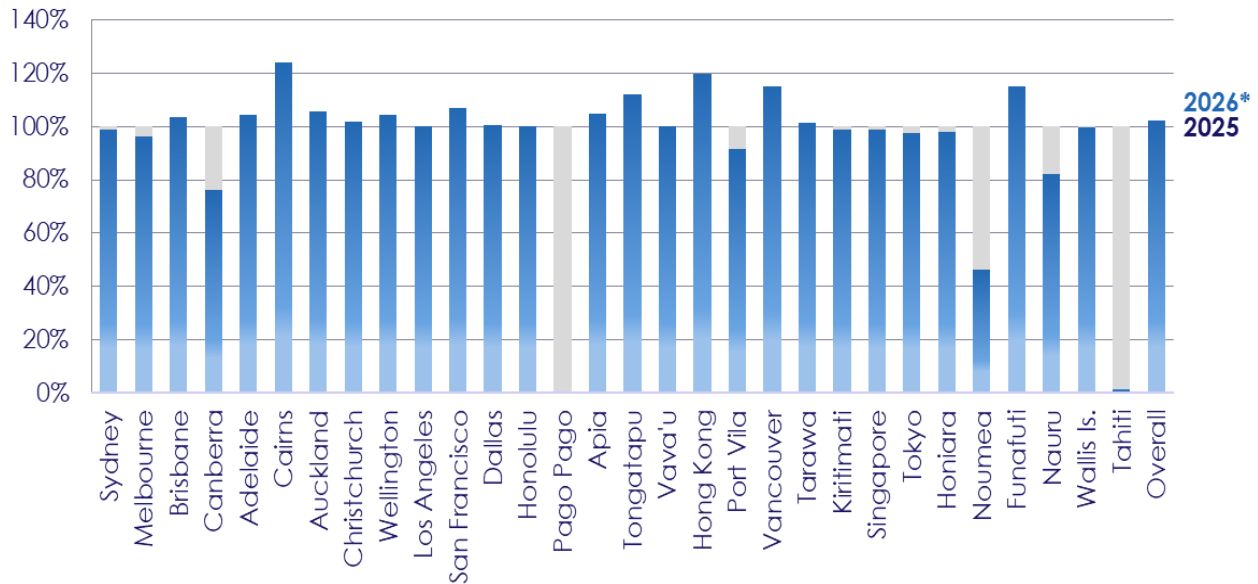
Rest of the World

→ Fiji gained a weekly service to Hong Kong throughout November 2026.

Recovery of Fiji-International Capacity

FIJI-INTERNATIONAL ORIGIN-DESTINATION CAPACITY, 2025 vs 2026*

Percent of seat movements vs 2024



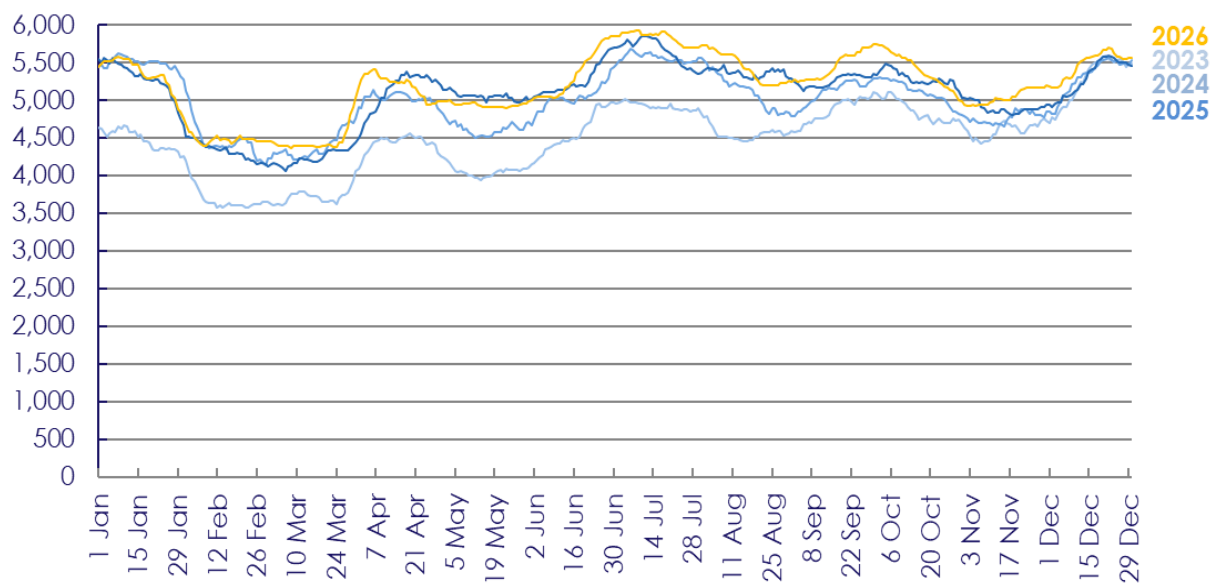
*Forward schedule as of 23 March 2026

Source: SRS schedule; Ailevon Pacific Aviation Consulting analysis

Fiji-International Seat Movement, 2023 v. 2026

CAPACITY OF FIJI-INTERNATIONAL ORIGIN-DESTINATION MARKET, 2023-2026

Seats per day each way; Rolling 7-day average



Source: SRS schedule; Ailevon Pacific Aviation Consulting analysis